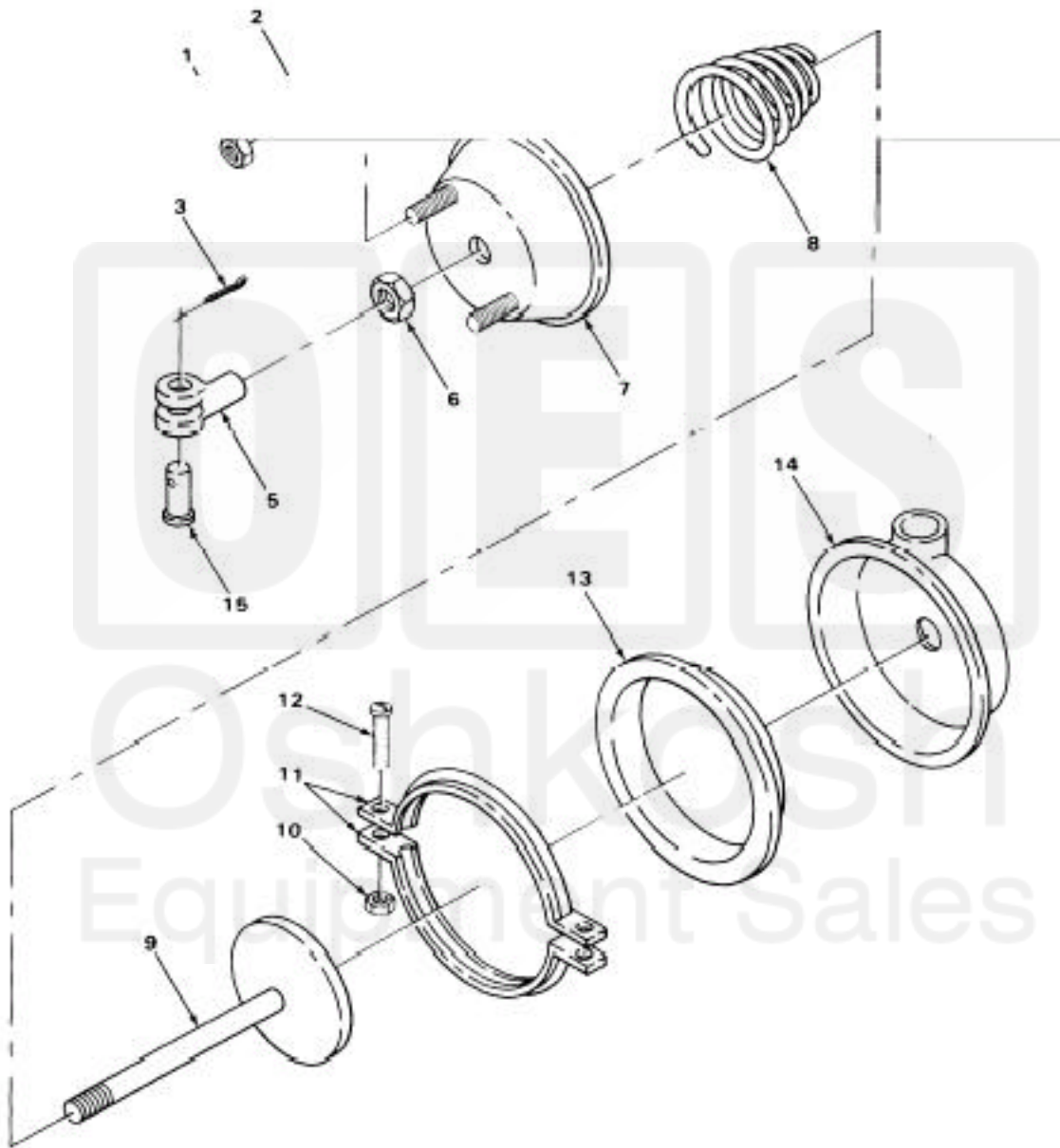


SECTION II

TM9-2320-273-24P

4  
5 THRU 14



TA217115

FIGURE 192. PUSHER AXLE BRAKE CHAMBER ASSEMBLY (MODELS M917, M919 AND M920).

Current part is item (13) on diagram. Available at [www.oshkoshequipment.com](http://www.oshkoshequipment.com)

SECTION II (1)	ITEM (2)	SMR (3)	FSCM (4)	TM9-2320-273-24P PART NUMBER	(5)	DESCRIPTION AND USABLE ON CODE (UOC)	(6)	QTY
GROUP:1208 AIR BRAKE SYSTEM								
FIGURE 192. PUSHER AXLE BRAKE CHAMBER ASSEMBLY (MODELS M917, M919 AND M920)								
1	PAOZZ	78500	NL-110			NUT, LOCK UOC:U23,U25,U26	2	
2	PAOZZ	78500	1229U1503Z			WASHER,FLAT UOC:U23,U25,U26	2	
3	PAOZZ	56442	DX226			PIN,COTTER UOC:U23,U25,U26	1	
4	PAOOO	78500	V33-3276-D-30			CHAMBER,AIR BRAKE RH UOC:U23,U25,U26	1	
4	PAOOO	78500	V32-3236-D-30			CHAMBER, AIR BRAKE LH UOC:U23,U25,U26	1	
5	PAOZZ	50153	11M018-518			.YOKE UOC:U23,U25,U26	1	
6	PAOZZ	40342	02W24018			.NUT, PLAIN, HEXAGON UOC:U23,U25,U26	1	
7	PBOZZ	40342	102415-A			.BODY ASSEMBLY UOC:U23,U25,U26	1	
8	PAOZZ	40342	600399-WS			.SPRING UOC:U23,U25,U26	1	
9	PAOZZ	40342	N-14095-T			.PLUNGER,QUICK RELEA UOC:U23,U25,U26	1	
10	PAOZZ	40342	2-X-5729			.NUT UOC:U23,U25,U26	2	
11	PAOZZ	40342	N-20163-D			.CLAMP,RIM CLENCHING UOC:U23,U25,U26	2	
12	PAOZZ	40342	3-X-706			.BOLT,CARRIAGE UOC:U23,U25,U26	2	
13	PCOZZ	40342	N-201300RF			.DIAPHRAGM AIR BRAKE UOC:U23,U25,U26	1	
14	PBOZZ	40342	N-13433-L			.COVER ASSEMBLY UOC:U23,U25,U26	1	
15	PAOZZ	78500	19X41			PIN STRAIGHT HEADED UOC:U23,U25,U26	1	
END OF FIGURE								



Current part is item (13) on diagram. Available at [www.oshkoshequipment.com](http://www.oshkoshequipment.com)